

CH2M and M&J 2016 Mentor-Protégé Agreement

M&J Engineering, P.C. (M&J) is a quality multidisciplinary consulting engineering firm. Since its inception in 2004, M&J has grown to over 100 employees providing engineering, environmental, construction and technology services to a broad range of clients. M&J provides a wide spectrum of professional services mainly in the area of construction management, construction inspection and Intelligent Transportation Systems (ITS).

Leveraging Our Collective Strengths

CH2M's well-established Mentor-Protégé program embraces the protégé and builds a long-term relationship. It enhances the protégé's skills so they can more effectively compete for significant work, and increases their participation with significant roles for future projects. When seeking a potential protégé, CH2M reaches out to disadvantaged firms that offer parallel services and who share our core values: respect for people, partners, and our planet, coupled with best-in-class, client-driven quality safely delivered.

Material Benefits

To provide material benefits and developmental gains consistent with the goals of the SBA's Mentor-Protégé Program, per our June 2016 agreement with M&J, CH2M will provide management, technical, and business development assistance to M&J. From project control process for use on large-scale projects to supporting development of an effective risk management program and sustainable practices to enhance long-term growth, CH2M is dedicated to creating a relationship that provides material benefits and developmental gains.



Rated "Outstanding" for our Small
Business Program



About CH2M

CH2M is the leading professional services firm delivering sustainable solutions to clients working on the world's most complex challenges. CH2Mers make a positive difference providing consulting, design, engineering and management solutions for vital infrastructure and resources serving diverse public- and private-sector clients. With \$5.4 billion in revenue, the firm's ~24,000 people operate from offices in 50 countries across four business groups: water; environment & nuclear; transportation; and energy & industrial. Known for managing global events such as the 2012 London Olympics, CH2M ranks among Ethisphere's World's Most Ethical Companies; number one in environmental consulting and program management by Engineering News-Record; and among sustainability leaders by independent analyst Verdantix. To learn more about the CH2M difference, visit us at ch2m.com; [linkedin.com/company/ch2m](https://www.linkedin.com/company/ch2m); twitter.com/ch2m; [facebook.com/ch2mhill](https://www.facebook.com/ch2mhill); and search for jobs at ch2m.com/careers.

Our Small Business Commitment

"It is the policy of CH2M that in the performance of U.S. Federal contracts, small, veteran-owned, service-disabled veteran-owned, historically underutilized business zone, businesses owned and controlled by socially and economically disadvantaged individuals, and women-owned small businesses, as well as Hispanic Serving Institutions, Historically Black Colleges and Universities/Minority Institutions, and Tribal Colleges and Universities, shall have the maximum practical opportunity to participate in subcontracts awarded by CH2M, in accordance with Public Laws 99-661 and 100-180."

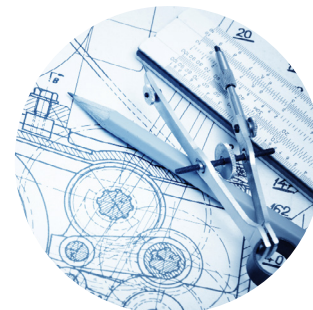
—Jacqueline Hinman, Chief Executive Officer

2004 inception
100 employees
1M+ safe work hours recorded with zero accidents

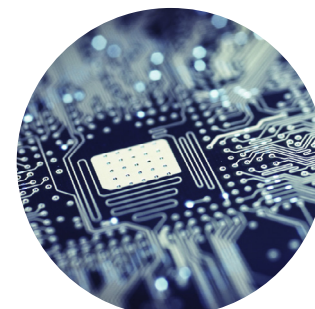
150 projects completed
\$2.175B projects managed



Construction Management



Engineering Design



Technology



Environmental



www.ch2m.com
Follow us @ch2mhill



© 2016 CH2M HILL
TR0219161112DEN

M&J Business Information

- SBA 8(a) – SDB Certified, Duns No. 619804599, Cage Code 5EDF2
- SBA 8(a) Entrance Date: 04/08/2015 - Exit Date: 04/08/2024
- North American Industry Classification System (NAICS) Codes 237990: Other Heavy and Civil Engineering Construction.
- Secondary NAICS codes of 541330 (Engineering Services) and 541620 (Environmental Consulting)
- Offices in NY, NJ, PA, CT, VA, DC

To engage the M&J – CH2M Mentor Protégé Agreement, please contact:

Mark Jaworski
CH2M
22 Cortland Street
31st Floor
New York, NY 10007
D: 646-253-8657
M: 732-759-7055
E: Mark.Jaworski@ch2m.com
www.ch2m.com

Asad Malik
M&J Engineering, P.C.
2003 Jericho Turnpike
New Hyde Park, NY 11040
D: 516-821-7300 Ext. 305
M: 516-526-9747
E: AMalik@mjengineers.com
www.mjengineers.com